

**SELF-IGNITING HAND TORCH
INSTRUCTION MANUAL
HT-1/2/3**

For use with Propane and MAPP gas only.
KEEP THIS INSTRUCTION MANUAL FOR FUTURE REFERENCE.

CAUTION

These INSTRUCTIONS are for experienced operators. Do NOT permit untrained persons to install, operate, or maintain this equipment. Do NOT attempt to install or operate this equipment until you have read and fully understand these instructions. If you do not fully understand these instructions, contact your supplier for further information.

WARNING

1. This is a flame producing device using pressurized Propane or Mapp fuel gas. This equipment will ignite instantly to produce an extremely hot temperature of over 2000 degrees and will heat or damage material in seconds. Heat from this torch can travel further than the eye can see. Make sure no combustible materials are unintentionally exposed to heat or flames. Disconnect torch from tank when not in use. In proper assembly, abuse or misuse can cause serious injury. Before each use, check for leaks. Do not use if leak cannot be corrected. Store fuel tank in a well ventilated area. This is not intended to be a complete training manual. Each situation has its own safety issues that the user must address.
2. Gas can get trapped inside the torch, even after the cylinder is removed. Always assume the torch has enough trapped gas to ignite and cause a dangerous situation. Point torch away from yourself and other items that can be damaged.
3. Always use torch in well-ventilated, non-enclosed work area to avoid possible health hazards from fumes.
4. Do not operate torch upside down or in a horizontal position as the tank will discharge liquid causing the flame to increase or flare up. If this happens, immediately turn the torch right side up or turn it off. When the liquid fuel has burned off or evaporated, the torch will then operate normally.
5. Keep combustible material away from or protected from the flame.
6. The torch's tip end will get very HOT and can cause a burn if touched.
7. Do not store the fuel tank in a room used for habitation, in a closed or confined space, near open flames, heaters, or in direct sunlight.
8. Do not leave work area hot.
9. Do not drop tank or torch or handle roughly.
10. Do not look into tip end or point at non-work objects.
11. Do not leave a burning torch unattended.
12. Do not leave the Ignition Button on and valve open when not in use.
13. Do not heat objects that contain or have contained flammable liquids or vapors.
14. Do not alter or tamper with the torch. Return torch for proper repairs.
15. Always keep out of the reach of children.
16. Always disconnect the torch from the tank when not in use.
17. Always wear eye protection when using the torch.
18. Always have water or a fire extinguisher ready.
19. Comply with all Federal, State and Local Government regulations and standards.

Model: HT-1

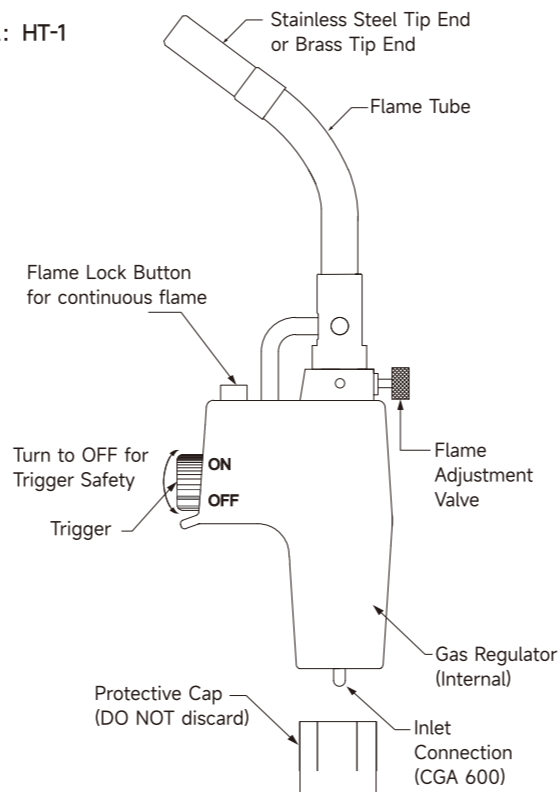
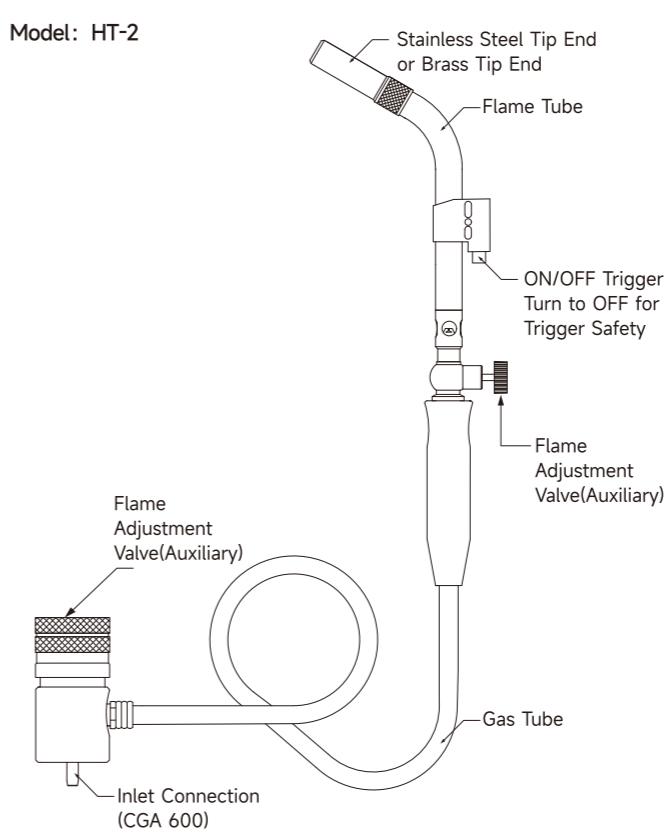
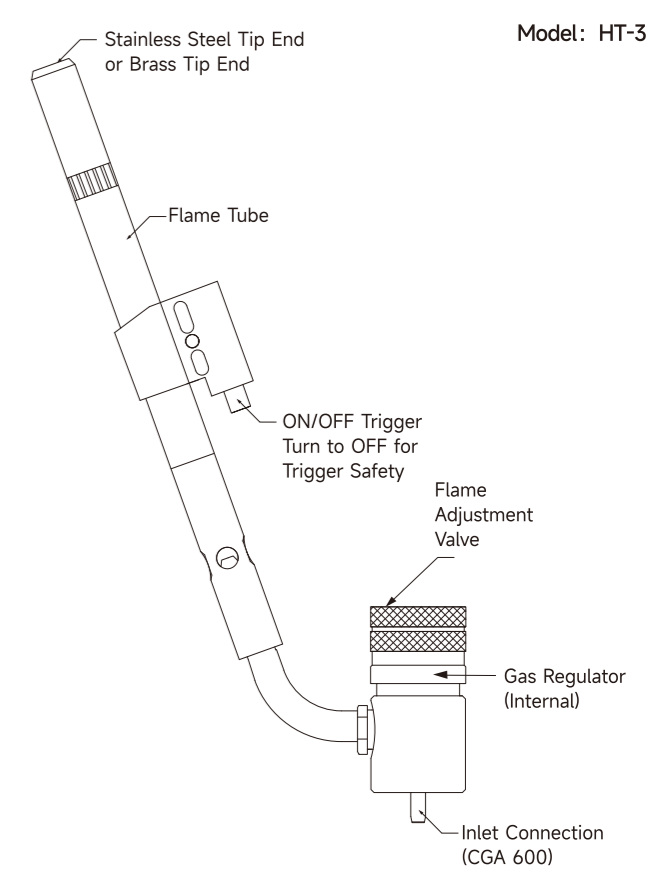


Figure 1 - Handtorch Identification

Model: HT-2



Model: HT-3



ASSEMBLY

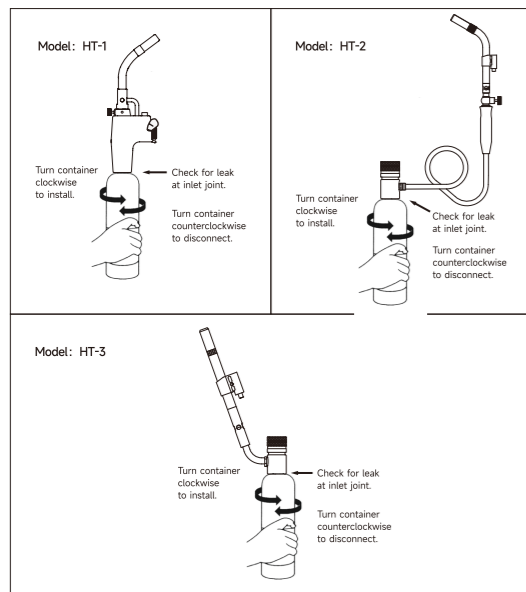


Figure 2-Assembly and Disassembly

1. Make sure the Flame Adjustment Valve is in the closed position by turning the Knob clockwise until it stops. Finger tighten. DO NOT force.
2. Make sure the Trigger Lock is not engaged in the "ON" position (see Figure 6, page 6).
3. Install a propane or MAPP® fuel container into the Inlet Connection of the torch. Turn the container clockwise (see Figure 2).
4. Acetylene gas can cause explosion or fire if used with this torch. Use Propane or MAPP gas only.

LEAK TESTING

1. After the fuel container is attached to the torch, check for leak at the inlet joint (see Figure 2, page 5).
2. Check for leak by applying leak detector solution or soapy water at the inlet connection.
3. If a leak is detected, replace the fuel container and check for leaks again.
4. If leaking still occurs, the problem may exist at the torch inlet connection. The torch MUST NOT be used if there is a leak.

IGNITING

WARNING

Use leak detector solution or leak detector fluid. Before each use check connections for leaks using a soapy water so

1. Turn trigger to ON position. Open valve counterclockwise one turn. Squeeze trigger slowly allowing gas to flow into the tip. Continue to pull the trigger until flame is lit.
2. Always point torch in safe direction.
3. Always wear eye protection and protective clothing.
4. If the torch is difficult to light, turn the Flame Adjusting Valve slightly in either direction and repeat Step 2.
5. After the torch is lit, turn the Flame Adjustment Valve to adjust for the proper flame setting (see Figure 3).

NOTE: Extremely low or high flame settings are hard to ignite. A low flame setting will cause Flametube to overheat.

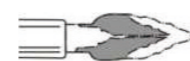
TORCH SHUT-OFF

1. Release Trigger to shut flame off or pull Trigger and release when using the Flame Lock feature.
2. Disconnect the fuel tank from the torch. Do so in a well-ventilated area away from sources of ignition. It should be expected that trapped gas inside the torch will be expelled from the torch.
3. Point torch away from yourself and objects, then pull Trigger to release any additional trapped gas inside torch.
4. Turn the Trigger to OFF and close the Gas Adjustment Valve.

Storage

1. Disconnect the torch from the fuel tank.
2. Store fuel tank in a well-ventilated area away from sources of ignition.

FLAME ADJUSTING TECHNIQUE



Correct Adjustment
Compact flame - dark blue points extending from tip about 1/2 tip diameters beyond end of tip. Tip remains cool.



Too Little Gas
Soft Flame-pressure too low to achieve proper mix. Tip will overheat. Darker blue portion of flame barely visible from end of tip. Flame pink in color.



Too Much Gas
Darker blue portion of flame comes out from tip. Combustion taking place beyond flametube.

HEATING TECHNIQUE

The maximum heat zone is very concentrated. It is located between 1 and 2 tip diameters from the end of the tip (Figure 4). Holding the torch too close or too far away from the target produces less heat (Figure 5). The angle at which the heat is applied can also increase the target heat

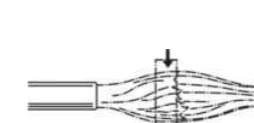


Figure 4-Maximum Heat Zone

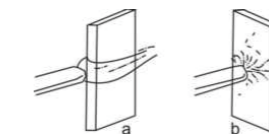


Figure 5 - Heating Angles
A. To obtain maximum target heat.
B. Less effective heating angle.

Temperature control

The heating effect may be reduced with one of the following steps:

1. Move the flame farther away from the target, or
2. Use propane fuel instead of MAPP fuel.

NOTE: Reducing the heat by adjusting the flame to a low setting can cause the tip to overheat.

FLAME LOCK BUTTON FEATURE

To Engage Trigger Safety Lock:
Turn the Trigger to the "OFF" position

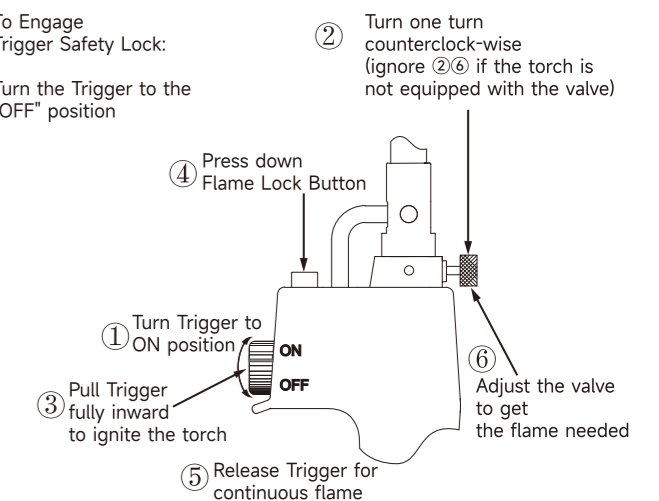


Figure 6-Trigger Safety Lock and Flame Lock Operation

Engaging the Flame Lock

1. Make sure the Trigger is in the "ON" position
2. Pull the Trigger fully inward and push the Flame Lock Button downward.
3. Make sure the torch is burning (see Figure 6)
4. Hold the Flame Lock Button and release the Trigger.
5. Release Trigger to shut flame off or pull Trigger and release when using the Flame Lock feature.



Scan us for more details