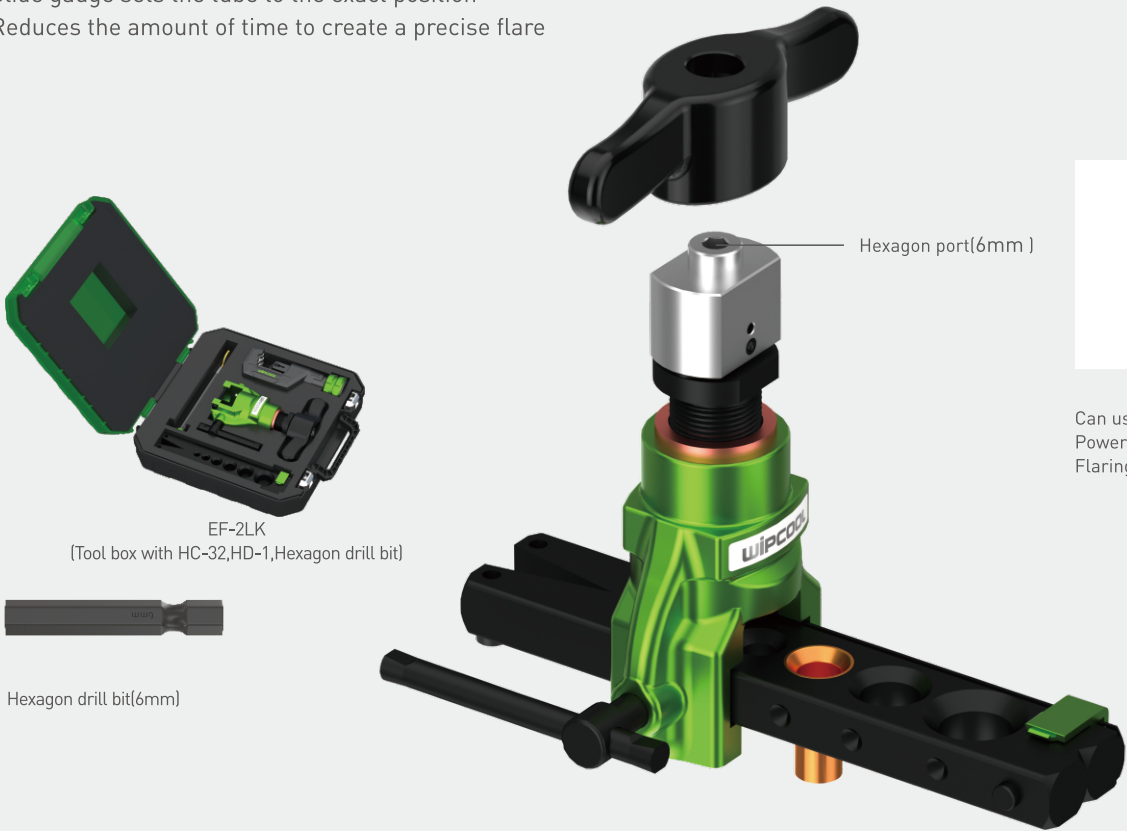


2-in-1 R410A Flaring Tool

Manual and Power Drive Fast&Precise Flaring

EF-2L

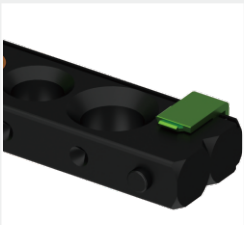
- Power drive design, used with power tools to quickly flaring.
- Special design for R410A system, also fit for usual tubing
- Aluminum body- 50% lighter than steel designs
- Slide gauge sets the tube to the exact position
- Reduces the amount of time to create a precise flare



Tools



Ultralight high strength aluminum T gantry



Side gauge for tube height adjustment sets



Blank-run design rotating handle



Toolbox

TECHNICAL DATA :			
Model	O.D Tube	Accessories	Packing
EF-2L		/	Blister
EF-2LK	1/4" 5/16" 3/8" 1/2" 5/8" 3/4"	HC-32,HD-1, Hexagon drill bit(6mm)	Toolbox